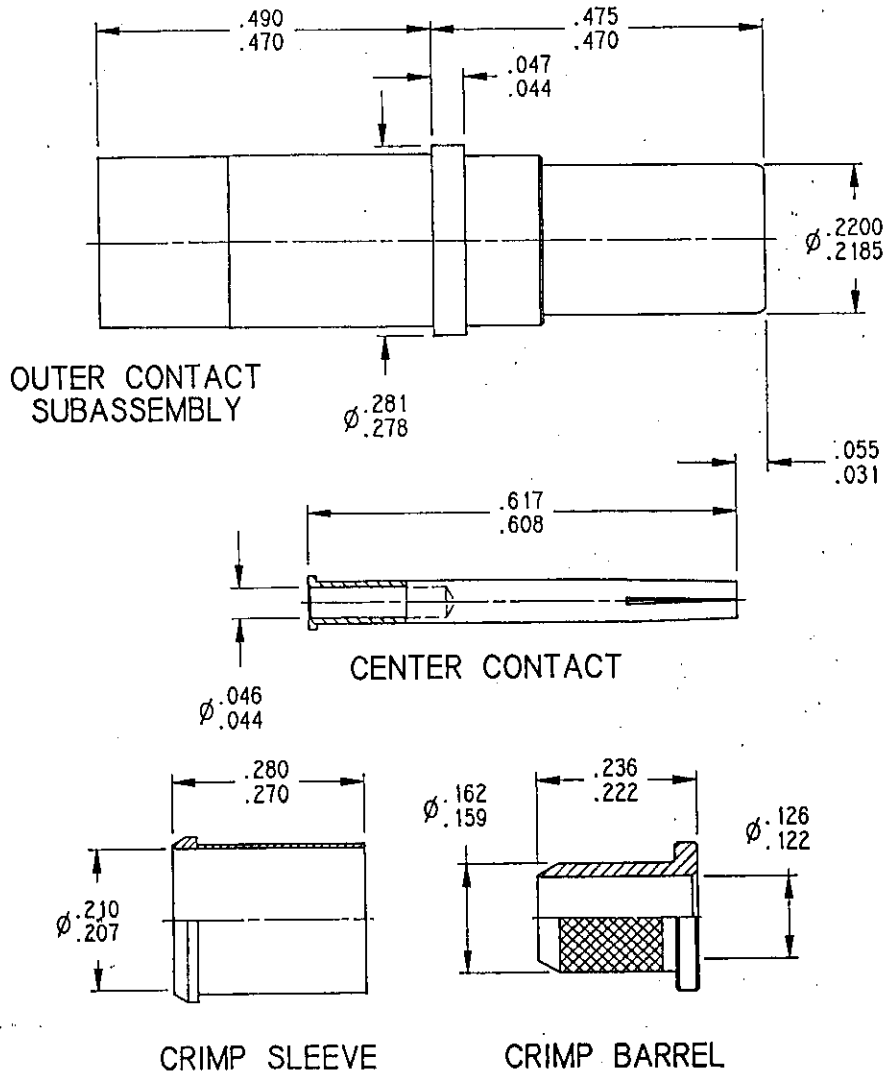


Séries
EPX

SIZE 5 COAXIAL CRIMP PIN CONTACT
FOR RG142 AND RG223 CABLES

Issue:
19 DEC. 94

Page
1 / 1



MATERIAL AND FINISH:

OUTER CONTACT AND CENTER CONTACT: BERYLLIUM COPPER_GOLD OVER NICKEL PLATED
CRIMP BARREL AND CRIMP SLEEVE: COPPER ALLOY_GOLD OVER NICKEL PLATED
DIELECTRIC: PTFE

WIRING INSTRUCTIONS: SEE RP7826

INSERTION/EXTRACTION TOOL: M81969/28-01

This information is given as an indication, in the continued goal to improve our products, we reserve the right to make any modifications judged necessary.

4112_9311

CREATION				
PEN:				
NOM: L FALETTI				
DATE: 5 NOV. 91				
APPR.: JP MACARI	19.12.94	REDRAWN BY CAD	JP MACARI	<i>C. Calini</i>
	Issue	Revisions	Name	Approved